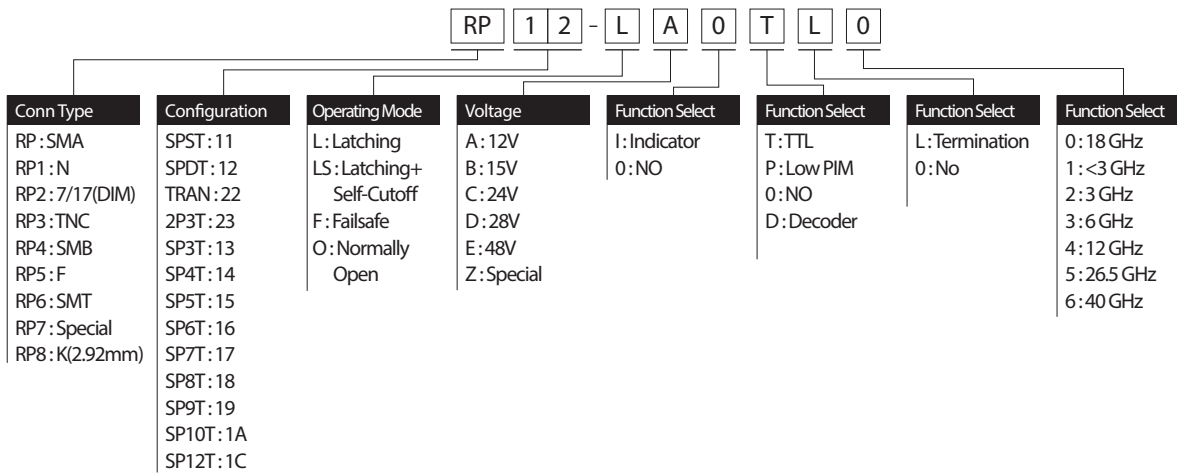


PART NUMBERING SYSTEM



SPECIFICATION

Connector Type	SMA
Form Factor	SPDT
Action	Latching
Actuation Voltage Available	12 VDC
Actuation Current Max	420 mA
Indicator	No
TTL LOGIC	ON STATE: 2.4 ~ 5.5 VDC OFF STATE: 0 ~ 0.8 VDC
Termination	Yes
Impedance	50 Ohms
Frequency Range	DC-18 GHz
Control I/O	D-Sub

ENVIRONMENTAL AND PHYSICAL CHARACTERISTICS

Operating Temperature	-25°C to 65°C
Vibration (MIL-STD-202 Method 214, Condition D, non-operating)	10 g's RMS
Shock (MIL-STD-202 Method 213, Condition D, non-operating)	500 g's
Standard Actuator Life	5,000,000 cycles
Actuator Life with additional features	1,000,000 cycles
Switching Time	20 ms (max.)
Humidity (Moisture Seal)	Available



RAPIDTEK
RF COAXIAL SWITCHES

PERFORMANCE CHARACTERISTICS

Frequency	DC – 6 GHz	6 – 12 GHz	12 – 18 GHz
Insertion Loss, dB, Max.	0.2	0.4	0.5
Isolation, dB, Min.	70	60	60
VSWR, Max.	1.25 : 1	1.4 : 1	1.5 : 1

PINOUT & LOGIC TABLE

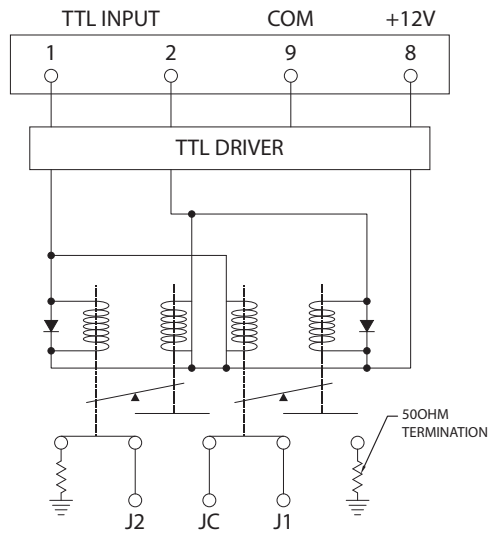
Pin No.

1	TTL INPUT 1
2	TTL INPUT 2
3~7	N/C
8	PWR
9	COM

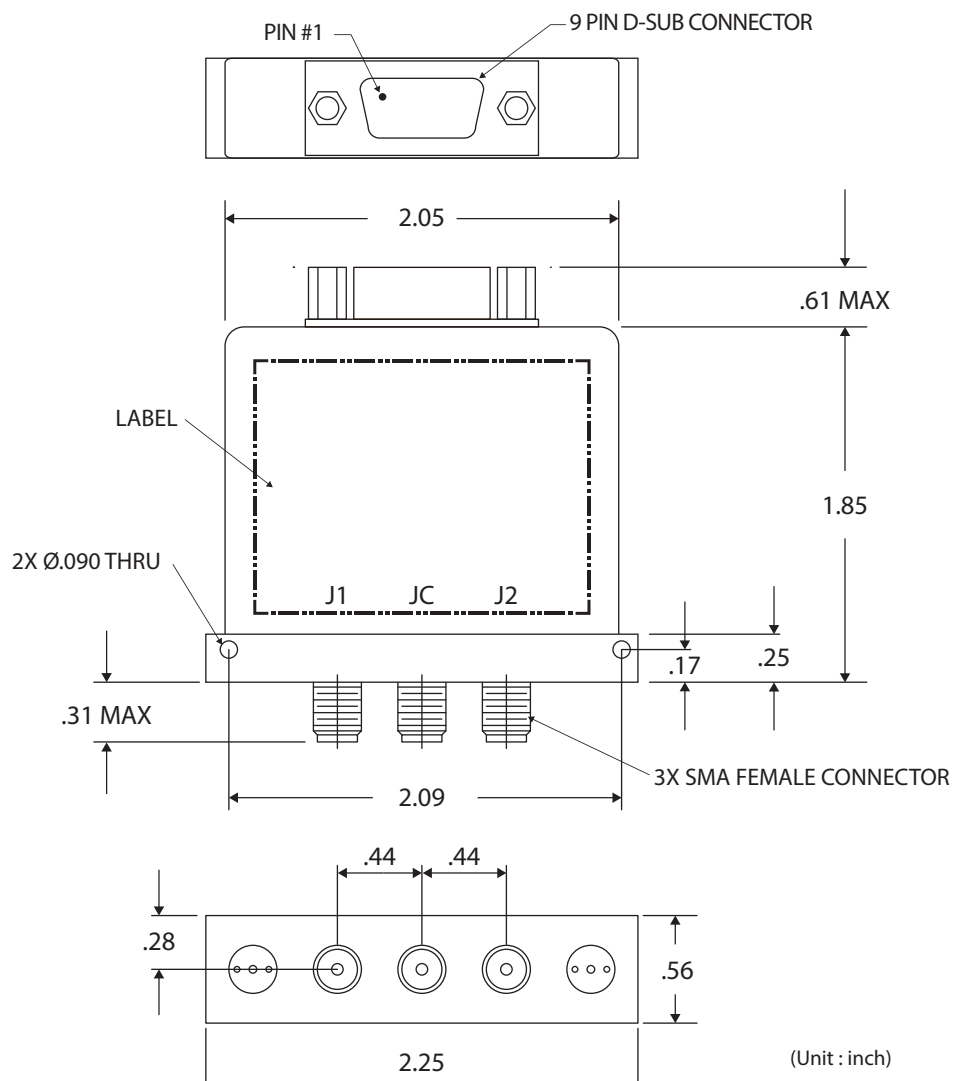
POS	RF PATH	TERMINATION
1	JC-J1	J2-TERMINATED
2	JC-J2	J1-TERMINATED



SCHEMATIC



STANDARD DIMENSIONS



RAPIDTEK
RF COAXIAL SWITCHES